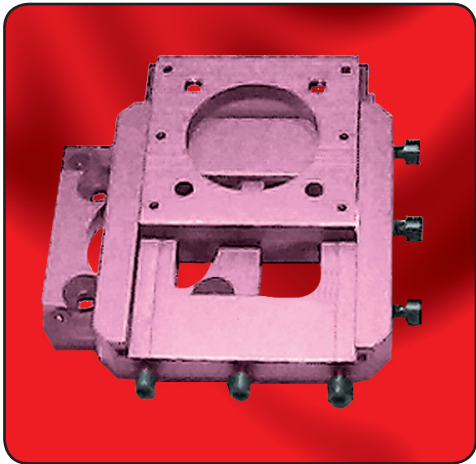


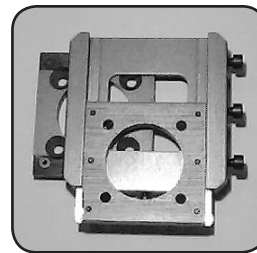
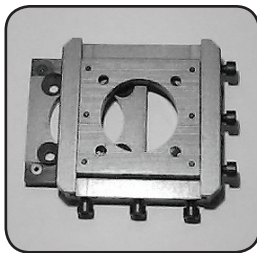
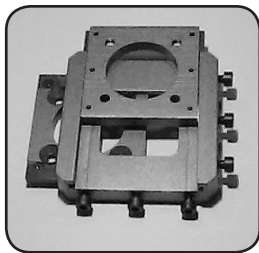
# ALIGNMENT TOOL



## Claim To Fame

- Full slide adjustment – up to 2 ¼ in (5.6 cm)
- Both AP and ML slide
- Standard Euro 4-hole pattern on top and bottom
- Can be used with the Ultra Pyramid (Male or Female)

No other tool offers this much slide adjustment in both AP and ML. Its relative light weight and thinness gives it great versatility, especially due to the threaded standard Euro 4-hole pattern on top and bottom. Its ease of use makes it the ultimate alignment tool when used in conjunction with the Ultra Pyramid System.



Stock Number							
<b>GUPA-AP4H-ML4H</b>	AA				<b>10<sup>3</sup>/<sub>4</sub> oz</b> (308 g)	<b>1<sup>1</sup>/<sub>8</sub> in</b> (2.9 cm)	<b>200lb</b> (90 kg)

## HOW TO ORDER

Stock #:  
**GUPA-AP4H-ML4H**

### SYMBOL LEGEND™

Material		Alignable	ATTACHMENT METHOD			Dimensions		Maximum Patient Weight	
			Top	Bottom					
<b>A</b> = Aluminum Alloy	<b>P</b> = Plastic	= Angular Adj.	= 1 Center Hole	= Clamp	= Male Pyr.	= Lamination	= Adhesive	= 80 lb (36 kg)	= 220 lb (100 kg)
<b>AA</b> = Aerospace Aluminum	<b>S</b> = Stainless	= Rotation	= 30mm Pylon	= Female Pyr.	= Thermoplastic	= Bolt Size	= Applied Ht. or Thickness	= 120 lb (54 kg)	= 243 lb (110 kg)
<b>F</b> = Foam	<b>T</b> = Titanium	= Slide Adjust	= Euro 4-Hole					= 165 lb (75 kg)	= 250 lb (113 kg)
<b>G</b> = Graph-Lite™	<b>W</b> = Wood							= 200 lb (90 kg)	= high activity



**DAW INDUSTRIES**

