

## 5PS10™ KD Knee (TGK-5PS10)

### A Highly Adjustable, Variable Cadence Knee with Stance Flexion; Specifically Designed for KD Amputees.

This True-KD Knee is engineered for the specific biomechanics of your Knee Disarticulation Amputee. The 5PS10 KD not only provides cosmetic evenness while sitting but allows you to adjust its 5-Bar geometry to capitalize on your Patient's voluntary control advantage. The same precision stability and swing adjustments provided by its transfemoral equivalent, the 5PS0-HW, provides complete customization to your Patient's requirements for security and freedom.

#### Primary benefits:

- ✓ **Whether your Patient is a new or experienced walker, a precision Stance Flexion adjustment (2° - 8°) allows heel-strike Cushion to be fine-tuned to your Patient's confidence level.**
- ✓ **Heightened Stability at Heel Strike.** During Stance Flexion loading, DAW 5-Bar Knee Design shifts the Instant Center of Rotation (ICR) further posterior, maximizing geometric stability from heel strike to mid-stance.
- ✓ Newly re-engineered DAW Pneumatics™ enable finer control of heel rise and extension dampening and require near-zero Amputee energy expenditure.
- ✓ Without affecting your alignment, the **Custom-ICR™ Stability** Adjustment increases stability while also increasing efficiency.



**Suggested K3 L-Codes\*** L5840 L5845 L5848 L5850

Complete Info & Images @ [daw-usa.com](http://daw-usa.com)

**Suggested K4 L-Codes\*** L5840 L5845 L5848 L5850 L5930

( See Full Suggested Coding Statement on pg. 53 )

#### Knee Specifications:

Stock Number	TGK-5PS10
Functional Level	K3 / K4
Amputation Level	Knee Disarticulation or Long TF
Weight Limit	275lb (125kg)
Knee Weight	2.2lb (997g)
Construction Material	Carbon Graphite
Build Height	(See Next Page)
Stability Controls	Custom-ICR™ Stability Adjustment, Stance Flexion Stability Adjustment & True-KD™ Polycentric Stability
Swing Controls	Separate Pneumatic Extension / Flexion Dampening, Extension Assist Adjustment & Swing Phase Trigger Point Adjustment
Maximum Flexion Angle	Approx. 135°
Proximal Connection	M6 4-Hole Pattern or Single Hole for 7/16 Bolt (See Selector Chart, Next Page)
Distal Connection	30mm Tube Clamp
Warranty	2 years included, Upgrade for an Additional 3 Years

#### Order Includes:

- 1x Swing Adjustment Wrench
- 1x Washer & Lock Washer Set  
(for KD Adapter Attachment)
- 1x Practitioner's Manual
- 1x Suggested L-Codes Letter

#### Recommended Foot:



**K3 Pro-Action™ Foot  
w/ Multi-Axial Ankle**

Full info on page 64

#### Recommended Rotator:



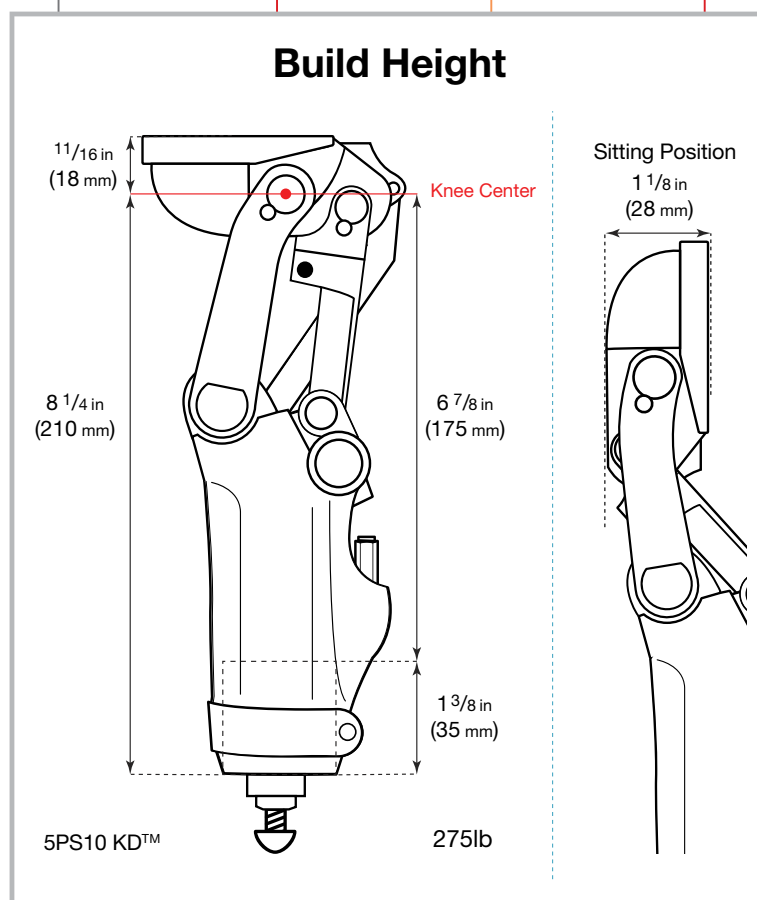
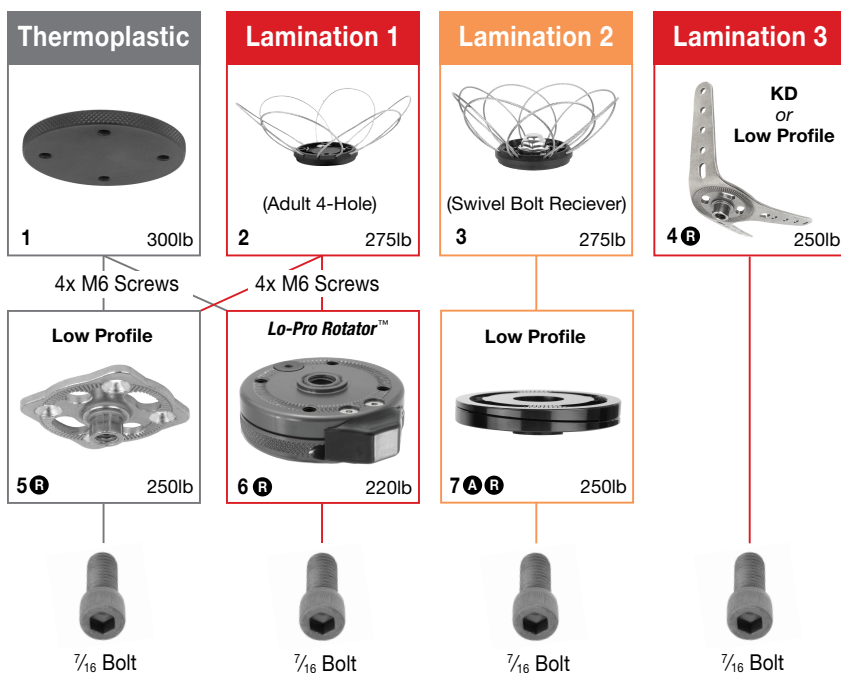
**Lo-Pro Rotator™**

Proximally Attach ANY  
4-Hole Connector

Full info on page 82

# 5PS10™ KD Knee

## Proximal Attachments Selector Chart



STOCK	MATERIAL	FULL INFO
1 TSC-T	<b>A</b>	Pg. 75
2 TSC-BX	<b>AA</b>	Pg. 73
3 TSC-A	<b>AA</b>	Pg. 72
4 TSC-KDL	<b>S</b>	Pg. 72
5 TSC-PSDS	<b>S</b>	Pg. 83
6 TKR-01	<b>A</b>	Pg. 82
7 TWP-A2A	<b>AA</b>	Pg. 82

MATERIALS
<b>A</b> = Aluminum Alloy
<b>AA</b> = Areospace Aluminum
<b>C</b> = Carbon Graphite
<b>S</b> = Stainless Steel
<b>T</b> = Titanium

ADJUSTABILITY
<b>A</b> = Angular
<b>R</b> = Rotational
<b>S</b> = Sliding