



# SELECTOR CHARTS

**The easy way to optimize your choice of Alignment System**

## SECTION 3.2

SECTION	PAGES
<b>3.2B Knee Connector's Selector Charts™</b>	
• Selector Chart™ for Adult .....	01
• Selector Chart™ for Child & Adolescent .....	02



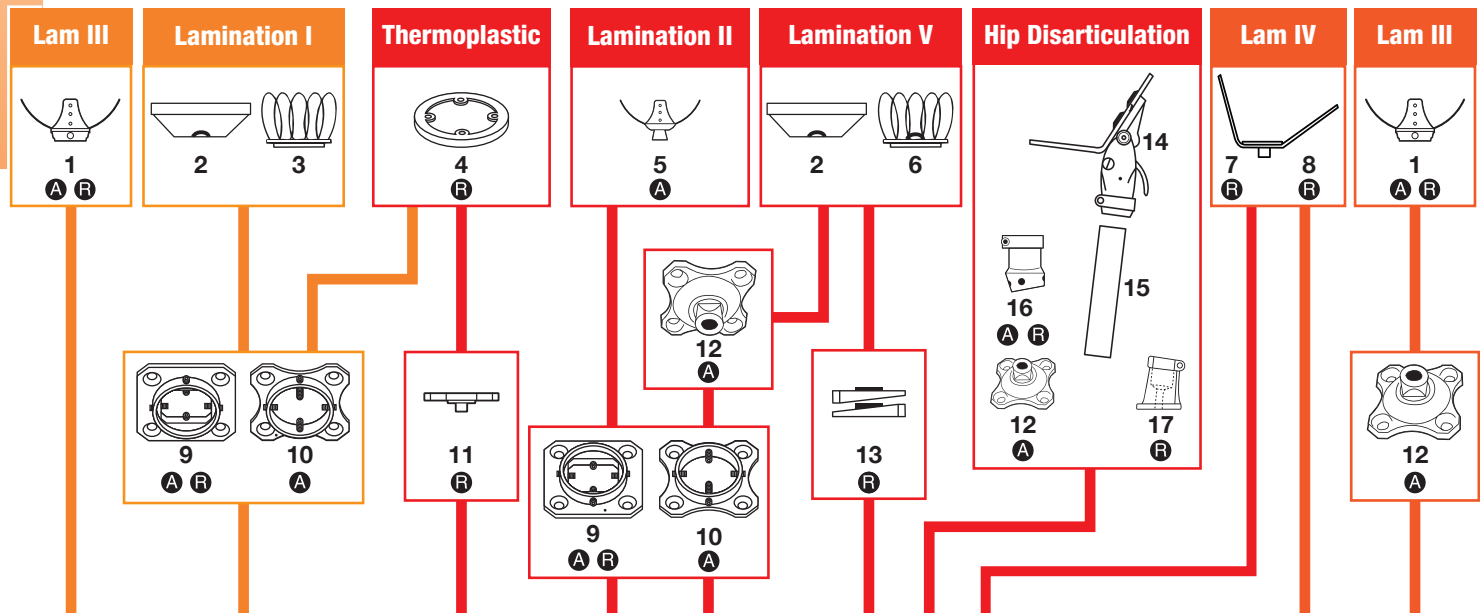
**AK**

**SELECTOR CHART**

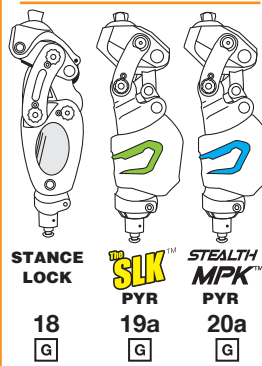
**SELECTOR CHART FOR ADULT TYPE "T" KNEES**

**Knee Connectors and Alignment Systems for all Type "T" Knees\***

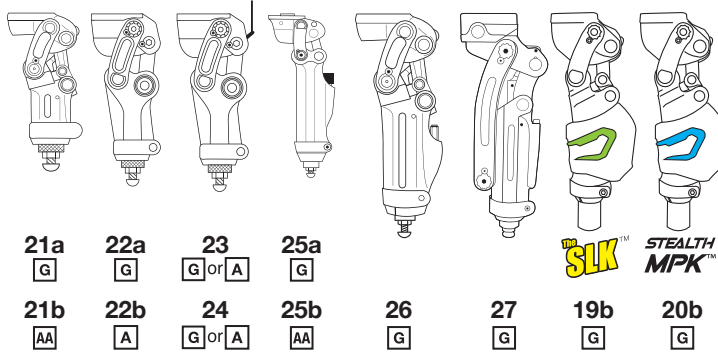
\* Type "T" Knees = DAW Adult Knees which stock # starts with a "T" (except TK-40C & TK-1C1)



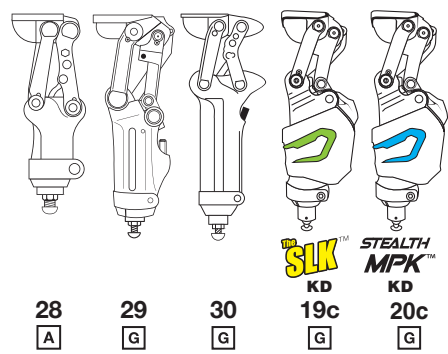
**PYRAMID K3 SYSTEM**



**TRANSFEMORAL KNEES**



**KD - KNEE DISARTICULATION**



**STOCK NUMBERS**

1. GUPS-FLAM3PRROT	S	9. GUPT-F4HROT	T	13. TWP-A2A	AA
2. TWB-04	W	- GUPS-F4HROT	S	14. TGH-01	G
3. TSC-BX	AA	10. GUPT-F4H	T	15. TTG-14	G
4. TSC-T	AA	- GUPS-F4H	S	- TTT-17	AA
5. GUPS-MLAM3PR	S	11. TSC-PSD	AA	16. GUPT-FCLAMP-ANG	AA
6. TSC-A	AA	- TSC-PSDS	S	17. TKC-0A	A
7. TSC-KDA-L	AA	12. GUPT-M4H	T	- TGC-0A	G
8. TSC-KDL	S	- GUPA-M4H	A		
		- GUPS-M4H	S		

**KNEES**

#	Graph-Lite™	Aluminum
18.	THK-4PSSL	n/a
19.	SLK MUTLI-MATRIX	n/a
20.	STEALTH MPK	n/a
21.	TGK-50S0	TK-50S0
22.	TGK-4000	TK-4000
23.	TGK-4001	TK-4001
24.	TGK-4002	TK-4002
25.	TGK-4P00-P	TK-4P00-P
26.	TGK-5PS0SLK	n/a
27.	n/a	TK-4010
28.	THK-4PSC	n/a
29.	TGK-5PS10	n/a
30.	TGK-4P10	n/a

**FUNCTIONS**

- A** = Angular Adjust
- R** = Rotation
- S** = Slide Adjust

**MATERIALS**

- A** = Aluminum Alloy
- AA** = Aerospace Aluminum
- F** = Foam
- G** = Graph-Lite™
- P** = Plastic
- S** = Stainless
- T** = Titanium
- W** = Wood



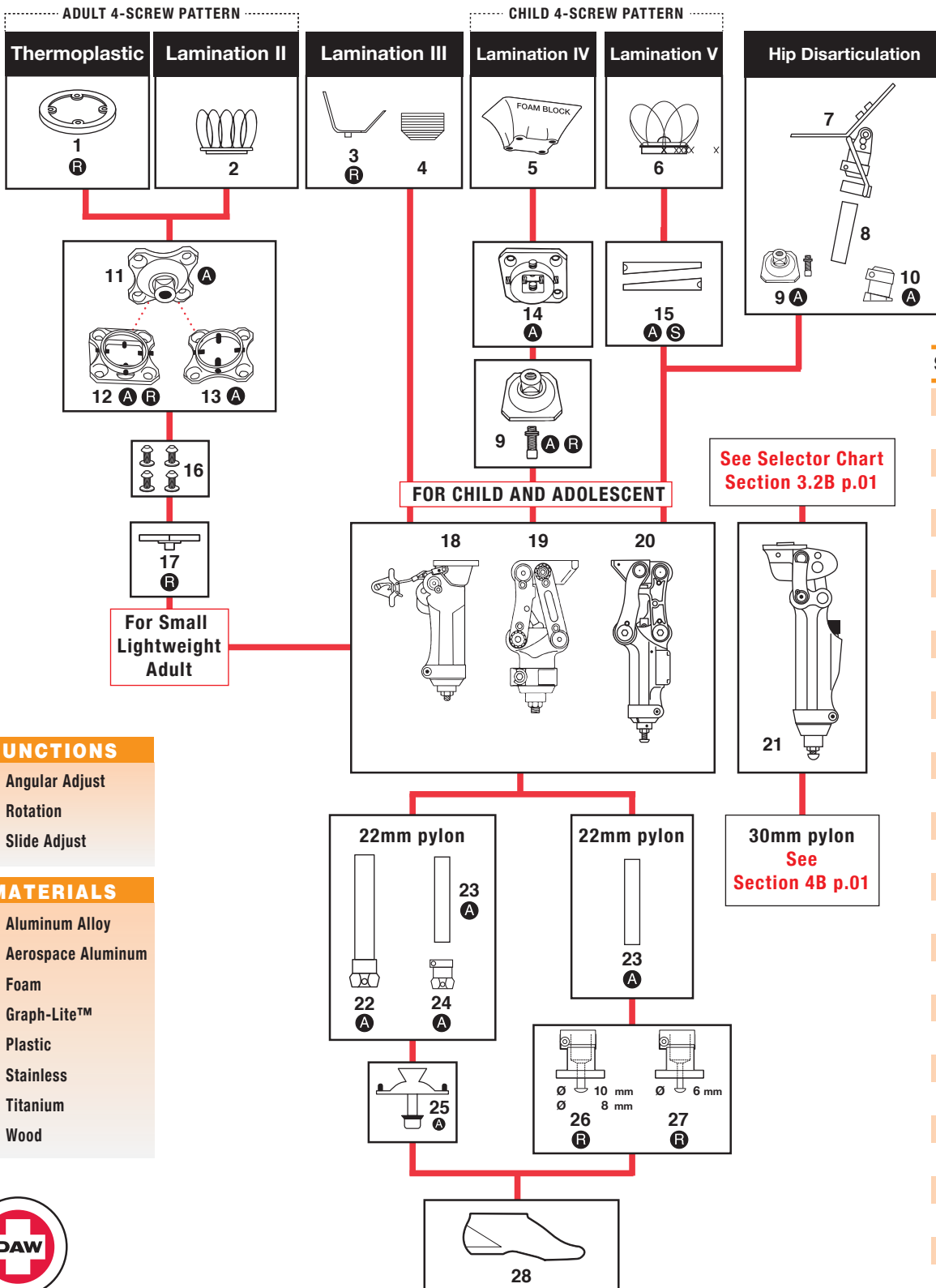
**DAW INDUSTRIES**



# SELECTOR CHART FOR CHILD & ADOLESCENT

# SELECTOR CHART™

## Selected AK Alignment Systems



### STOCK NUMBERS

1. TSC-T	AA
2. TSC-BX	AA
3. TSC-KDC-L	S
4. TWB-C	W
5. GUPC-FB	F
6. TSC-WC	A
7. TCH-Ø1	AA
8. TTC-15	A
9. GUPAC-MP1	A
10. TKC-CA	AA
11. GUPT-M4H	T
12. GUPT-F4H	A
13. GUPT-F4HROT	T
14. GUPAC-F4H	A
15. TWP-C2	P
16. G4H-CREWNUTSET	AA
17. TKC-C4	S
18. TK-1C1	A
19. TK-4ØC	G
20. TK-4PØC	AA
21. TGK-4PØØ-P	AA
TK-4PØØ-P	A
22. GUPAC-FPYLON-12	AA
23. TTC-15 (22mm)	A
24. GUPAC-FCLAMP	AA
25. GUPAC-SACH-8M	AA
26. TAC-ØA (10mm)	SA
- TAC-ØW (8mm)	A
27. TAC-ØØ (6mm)	A
28. TFF-ØCXX L/R	F

### FUNCTIONS

- A** = Angular Adjust
- R** = Rotation
- S** = Slide Adjust

### MATERIALS

- A** = Aluminum Alloy
- AA** = Aerospace Aluminum
- F** = Foam
- G** = Graph-Lite™
- P** = Plastic
- S** = Stainless
- T** = Titanium
- W** = Wood



**DAW INDUSTRIES**