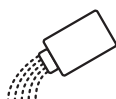
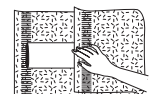
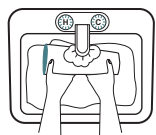


Cleaning the Cool-Sleeve

Proper cleaning and residual limb hygiene is the most important factor in ensuring long and comfortable use of the **COOL-SLEEVE**. The **COOL-SLEEVE** needs to be cleaned at the end of each day of wear. Always allow the **COOL-SLEEVE** to dry overnight.

For Daily Cleaning

The **COOL-SLEEVE** should be washed daily.



1. After removing the **COOL-SLEEVE**, it will be inside-out (gel side out). Hand wash the **COOL-SLEEVE** with soap & water. You **MUST** use a soap with neutral PH that does not contain: Alcohol, solvent, coloring or fragrance (An example in the USA is Unscented Ivory Soap). **DO NOT** submerge the **COOL-SLEEVE** in water and **DO NOT** scrub.
2. Rinse the **COOL-SLEEVE** very thoroughly in **COLD** water. Again, **DO NOT** immerse **COOL-SLEEVE**.
3. Gently pat dry the **COOL-SLEEVE**. **DO NOT** rub.
4. Keep **COOL-SLEEVE** inside-out (cloth side in). Let dry overnight.
5. Next morning, if desired, sprinkle baby or talcum powder lightly over the gel side of the **COOL-SLEEVE**.

Turn the **COOL-SLEEVE** completely right side out (cloth side out) and pat dry.



DAW
Industries

DAW offers many more unique solutions...

Visit our website at:

www.daw-usa.com

© Copyright 2019, DAW Industries, San Diego, CA - All Rights Reserved 020819

AMPUTEE INSTRUCTIONS

Cool Sleeve™

The Ultimate Comfort Gel Sleeve.

NOW

You've got something
up your sleeve...

Comfort®

TABLE OF CONTENTS

Warranty	1
Return Policy	1
Skin Allergy	1
Perspiration	1
Donning the Cool-Sleeve	2
Storing the Cool-Sleeve	2
Cleaning the Cool-Sleeve	3
- For Daily Cleaning	3



DAW
Industries

© Copyright 2019, DAW Industries, San Diego, CA - All Rights Reserved 020819

www.daw-usa.com

Warranty

The durability of the **COOL-SLEEVE** depends on many factors such as: patient activity level, smoothness and design of socket brim, tightness of pants to the socket brim. Therefore **COOL-SLEEVE** can only be warranted against manufactures defects. The **COOL-SLEEVE** is NOT recommended for active patients.

Return Policy

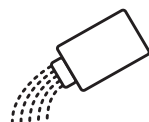
Only a Certified Prosthetist can obtain a Return Authorization Number (RA#) from DAW. Products returned to DAW without an RA# will be returned to the sender.

Skin Allergy

The **COOL-SLEEVE** is manufactured with great care from the highest grade of TPE material. The material is relatively inert compared to other liner materials. Allergic reactions occur in less than one in one hundred thousand people. Most skin redness is not an allergy. Should you develop skin redness and/or irritation, contact your Prosthetist immediately.

Perspiration

It is not unusual for new **COOL-SLEEVE** wearers to experience perspiration during initial use of the **COOL-SLEEVE**. In the unlikely event that the **COOL-SLEEVE** becomes sticky, LIGHTLY apply baby or talcum powder to the gel side as needed.



Did you know?

Did you know that amputees wearing a Gel Liner with a distal attachment often prefer to wear a Cool-Sleeve as it helps eliminate the distal pull and friction?



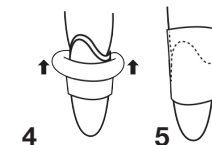
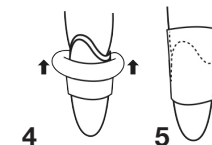
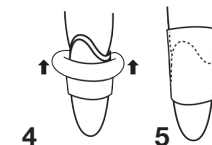
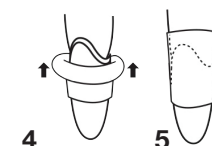
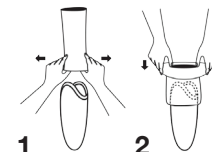
DAW[®]
Industries

© Copyright 2019, DAW Industries, San Diego, CA - All Rights Reserved 020819

Donning the Cool-Sleeve

The **COOL-SLEEVE** is designed to ROLL UP (DO NOT PULL UP) easily onto your patient's residual limb. Therefore, **DO NOT** apply any type of lubricant to either the residual limb or the **COOL-SLEEVE** prior to donning. Any oil based product such as petroleum jelly will damage the **COOL-SLEEVE** and should not be used. The residual limb should be clean, dry, and free of soap residue and/or talcum .

1. Stretch open the bottom (small) opening of the **COOL-SLEEVE** and fit it over the upper brim of the socket so that it is at least 2 in (5cm) below the top of the socket brim, all around the brim, even in the back part of the leg (popliteal area).
2. ROLL the **COOL-SLEEVE** over itself all the way below the socket brim.
3. Make sure the seam of the **COOL-SLEEVE** is positioned on either the right or the left side of the leg.
4. Don the residual limb into the prosthetic socket.
5. ROLL back up (DO NOT PULL UP) the **COOL-SLEEVE** over the knee & thigh.



- IMPORTANT:**
- Always ROLL the **COOL-SLEEVE** onto the residual limb. Never pull up. Pulling up will result in stretching the skin creating an uncomfortable fit.
 - Avoid air pockets and wrinkles between the residual limb and the **COOL-SLEEVE**.

Storing the Cool-Sleeve

When the liner is not being worn it should be stored in a cool dry place with the cloth side out.

DAW offers many more unique solutions...

Visit our website at:

www.daw-usa.com



DAW[®]
Industries

© Copyright 2019, DAW Industries, San Diego, CA - All Rights Reserved 020819